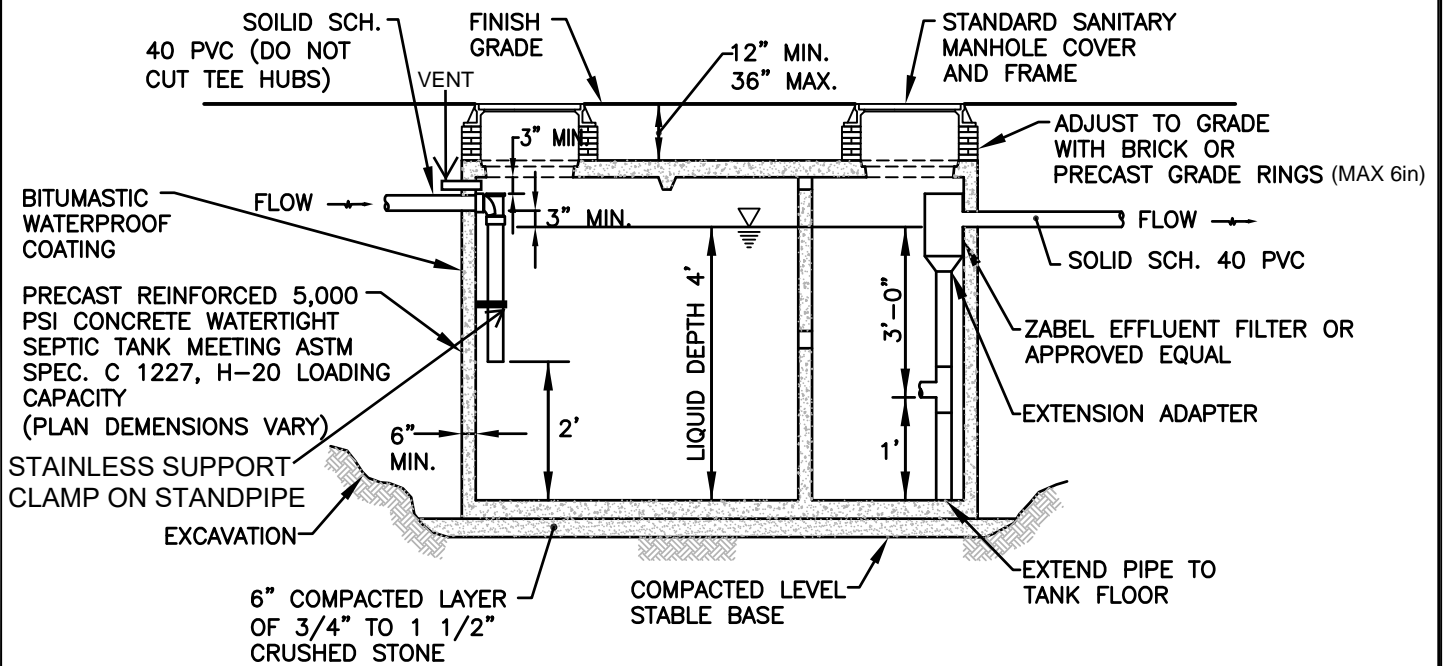


TYPICAL GREASE INTERCEPTOR



GREASE INTERCEPTOR WITH ZABEL FILTER

NOTE:

ZABEL EFFLUENT FILTER MODEL TO BE BASED UPON MAXIMUM DAILY FLOW RATE. MODEL A300 TO BE USED FOR FLOWS TO 6,000 GPD.

Detail No. WSA - 26 (1 of 2)

Grease Interceptor

Contract DD

Date: DEC 2019

Scale: Not to Scale



WARWICK SEWER AUTHORITY

125 Arthur Devine Boulevard
Warwick, Rhode Island 02889

Grease Interceptor Checklist

Interceptor with standard effluent tee:

- Tank has H2O loading capacity
- Bitumastic waterproof coating
- Influent and effluent tees visible in cover opening
- Influent and effluent tees have at least 1 stainless support strap
- Effluent tee has 6in riser
- Influent standpipe 24in off bottom of tank
- Effluent standpipe 12in off bottom of tank
- At least 2 manhole covers over tees. Larger tanks (2000+) may require 3 manhole covers with third near center for proper cleaning.

Interceptor with Zabel filter additional items:

Zabel filter must be installed according to manufacturer's specifications.

- Support pipe installed to floor under the filter with tee opening position 12in off the floor (stainless strap not needed if space does not allow).
- Support pipe under the tee must have at least four 1in holes near bottom for draining during tank cleanings.
- Handle extension must be installed on the filter if it cannot be safely reached.

Detail No. WSA - 26 (2 of 2)
Grease Interceptor

Contract DD

Date: DEC 2019

Scale: Not to Scale



WARWICK SEWER AUTHORITY

125 Arthur Devine Boulevard
Warwick, Rhode Island 02889